

The Sword & Shield

MICHIGAN ALPHA CHAPTER OF PHI DELTA THETA FRATERNITY

Ann Arbor, Michigan

Volume LXXX, No. 1 Winter 2009

2008-2009 Chapter House Maintenance Report

\$40,000 from Annual Fund Keeps House in Great Shape, but More Work Needed

Keeping Michigan Alpha's 105 year old chapter house in top shape is a mission of the Alumni Association that never ends. Accomplishing this mission would not be possible without the strong support of alumni.

The chapter house is presently in the best shape it has been in decades. The Alumni Association invested approximately \$500,000 during the early 2000s in a major renovation to improve the structural soundness, compliance with Ann Arbor Building Codes, security, historical integrity and comfort of the facility.

Each summer the Alumni Association does planned maintenance and improvements when financially feasible. In coming years, we hope to perform a number of upgrades to the house interior, porches, driveway/parking areas and yard. We would like to give a special thanks to **Joe Fattore '79** for overseeing the summer 2008 maintenance projects.

Thanks to alums' generous donations to the Annual Fund, the Alumni Association was able to perform approximately \$40,000 worth of significant maintenance projects during 2008 including:

Installation of new tiling, fixtures and window blinds in the third floor bathroom.



View of the old third floor shower before renovation.



Pictures of
Homecoming
2008

Visit the Alumni Association's New Web Site!

www.pdtumich.com

Register your e-mail address and receive our e-newsletter.

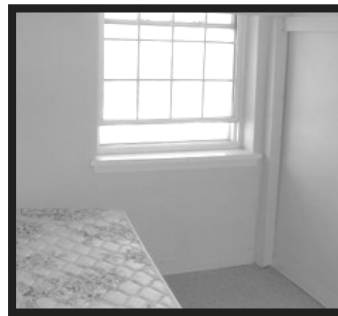
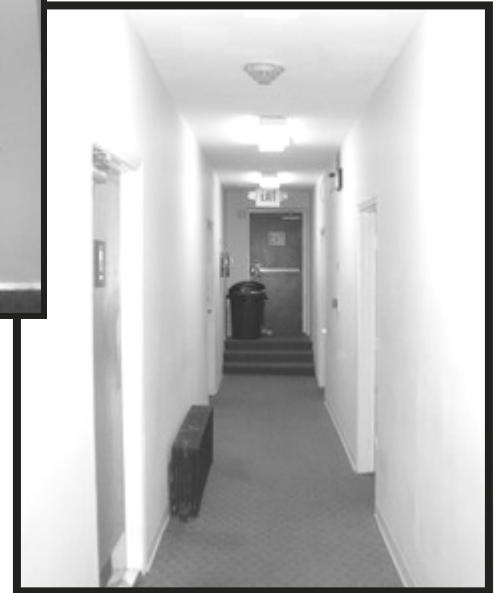
Fixed the "bubble" in the second floor hallway floor near the stairs.



Replaced the main refrigerator in the kitchen.



Repainted the stair railing from the foyer to the third floor. Also repainted the entire second floor and select third floor rooms.



* Repaired a leak in the steam pipes located in the wall of the basement (not pictured).

* Bought 20 new chairs and 4 new tables for the dining room (not pictured).

Phi Delta Theta and Ann Arbor Active Against ALS to Host 1st Annual Boxcar Derby Michigan Alpha Philanthropy Event will Raise Money to Fight Lou Gehrig's Disease (ALS)

Michigan Alpha and Ann Arbor Active Against ALS (A2A3) are partnering on the first annual Boxcar Derby and Picnic to raise money for Lou Gehrig's Disease (ALS) research. The derby will take place on a Saturday in late March or early April. The race course begins where South University meets Oxford and ends near the chapter house. A picnic will be held on the lawn of the fraternity. The entrance fee for the race is \$25 per team, payable to A2A3 which is a 501(c)(3) non-profit organization.

Registration forms are available from the web sites of Michigan Alpha and A2A3. The registration fee may be paid on the day of the race. Visit <http://umich.phideltatheta.org> or <http://www.a2a3.org> for more information. If you are interested in participating or being a sponsor/donor, please contact Michigan Alpha active member **Patrick Moore '09** by e-mail at pwolfram@umich.edu.